

2017 progress report



HOSPITAL
SAN JUAN DE DIOS
DEL ALJARAFA
CONSORCIO SANITARIO PÚBLICO DEL ALJARAFA
www.hsjda.es

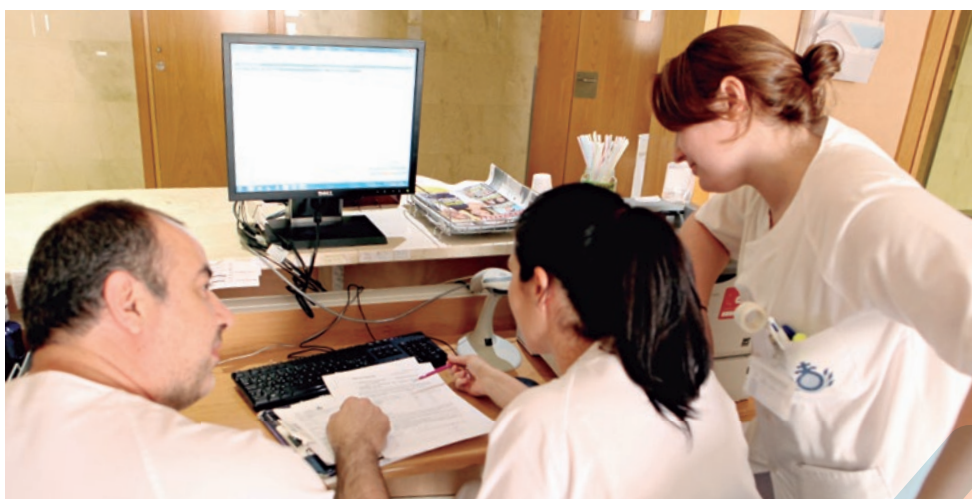


INTRODUCTION

2017 has been a year of changes, and also one of taking objective stock of the role that Hospital del Aljarafe plays in the environment in which it serves as the referral hospital. It has been a year in which the hospital has operated at full capacity, through a model of efficient health care management that will mark fifteen years of use in 2018. In 2013 what we today know as the Aljarafe Public Health Consortium was born, and was the year in which the Andalusian Health Service and the Hospitaller Order of San Juan de Dios joined together to respond to the needs of a growing population in the metropolitan area of Seville known as el Aljarafe. Today we take care of the health of more than 289,000 residents belonging to 28 municipalities in the region (26 in Seville and 2 in Huelva). The model of the Consortium, unique within the realm of Andalusian public health, provides a highly efficient response to the needs of the region, with a historical and close collaboration with Primary Health Care and with the referral hospital, the Hospital Universitario Virgen del Rocío. This model of management makes it possible to give users of Aljarafe comprehensive care that heals and cares for their illnesses at a physical and spiritual level, thanks to the work of its excellent professionals who, faithful to the values of the Order of San Juan de Dios, practice with a high level of ethics and humanization.

2017 was the year in which the Hospital del Aljarafe has set out a roadmap for the coming years, based on the notion of a “high resolution” hospital, which believes in the incorporation of new technologies, in the continuous training of its professionals both technically and ethically, in research as a tool of knowledge for its application to clinical practice, and in the improvement of its services portfolio. We are committed to close collaboration and sensitivity to the needs of our referral population, working closely together with our social interest groups. We are committed to being a dynamic, healthy and open doors hospital, a hospital that is respectful of its environment and of the rights of human beings to their fullest extent; a hospital of our time that is committed the curing of illnesses, but is above all a promoter of health.

The data in this report are testament to these intentions, and to the excellent work carried out this year by these professionals. It is worth noting not only their excellent training, but also their strong feeling of belonging to the organization. This sense of belonging and constant organizational improvement are what most benefits the residents of Aljarafe. It is our intention that this should remain the case, and we should therefore take all the steps necessary to continue to make progress and achieve our vision, focusing each day on our mission.



RESOURCES

In-patient rooms ...	192
ICU beds ...	8
Operating theatres ...	8
Minor surgery theatres ...	2
Consulation rooms ...	48
Treatment / examination booths ...	23
Emergency / observation beds ...	16
Paediatric observation beds ...	7
Short Tratments Stations ...	16



PORTFOLIO OF SERVICES

MEDICAL AREA

CRITICAL AND EMERGENCY CARE

Intensive Care Unit
Accident and Emergency
Paediatrics

MEDICINE

Digestive
Cardiology
Internal Medicine
Pulmonology

DIAGNOSTIC AREA

LABORATORY

Pathological Anatomy
Biochemistry
Haematology
Microbiology

RADIOLOGY

SURGICAL AREA

ANAESTHESIA AND RESUSCITATION

GENERAL SURGERY AND DIGESTIVE SYSTEM

GYNAECOLOGY

OPHTHALMOLOGY

ENT

ORTHOPAEDICS AND ORTHOPAEDIC SURGERY

UROLOGY

OTHER AREAS

USER SERVICE AND QUALITY

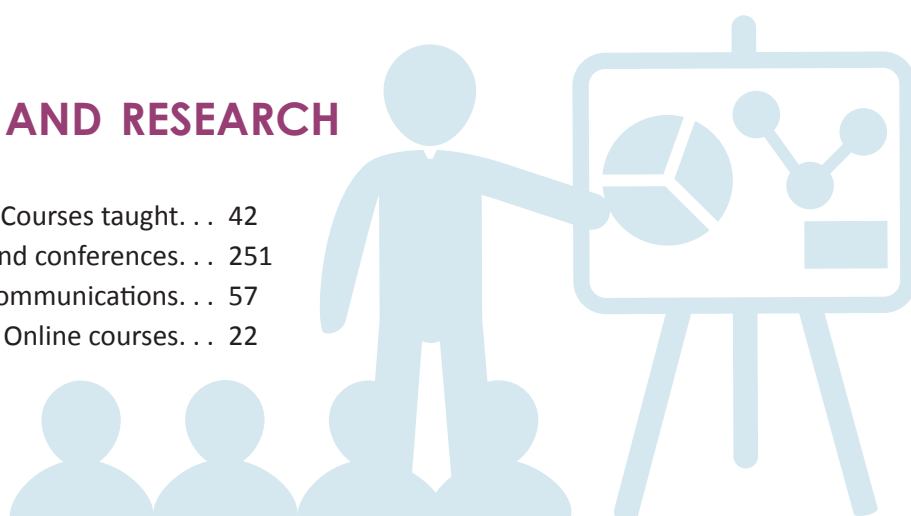
PHARMACY

PREVENTION AND ENVIRONMENT

REHABILITATION AND MUSCULOSKELETAL SYSTEM

TRAINING, TEACHING AND RESEARCH

CPD. Courses taught. . .	42
Attendance of courses, workshops and conferences. . .	251
Scientific communications. . .	57
Online courses. . .	22



ACKNOWLEDGEMENTS

- Accreditation for Advanced Level Quality Hospital San Juan de Dios del Aljarafe
- Accreditation for quality of Advanced Level Services: Gynaecology, Radiology, ENT
- Accreditation for the Optimum Level quality service: Critical and Emergency Care and Urology
- Bronze Distinction for the Andalusian Network of Smoke Free Health Services
- Certificate as Family Friendly Company
- Certificate of Universal Accessibility
- Recognition from the Security Observatory on perioperative pain
- Research assistance SJD 2017. The Provincial Curia Andalusia to the project: Promotion of the autonomy and quality of life of patients with musculoskeletal pain and functional limitation.
- Prize for the best speech at the 21st Conference of the Spanish Society of Clinical Microbiology (SEIMC).

CLINICAL ACTIVITY

HOSPITALISATION AREA

Urgent admissions ... 6,335
 Planned admissions ... 3,666
Total admissions ... 10,001

Stays ... 54,805
 Average stay ... 5.5
 Occupancy rate ... 98.1%
 Pressure on A&E ... 63.3
 Admissions/day ... 27.4

SURGICAL AREA

Planned operations with admission ... 2,958
 Urgent operations ... 1,516
 Major outpatient surgery ... 5,888
 Minor surgery ... 2,175

Total operations ... 12,537

Operating theatre occupancy rate ... 80
 Resolution index ... 80.4
 Suspended operations rate ... 3.71

Source: Scorecard

TARGET POPULATION 292,610

Source: Andalusian Institute of Statistics (1/1/17)

A&E AREA

Emergencies dealt with ... 99,862
 Emergencies without admission ... 93,527
 Percentage of emergencies without admission ... 93.7%
 Average emergencies per day ... 274

EXTERNAL CONSULTATIONS AREA

TOTAL CONSULTATIONS CONDUCTED ... 173,276

First consultations ... 94,651
 Successive consultations ... 78,625
 First primary care consultations ... 44,825
 Ratio of first/successive ... 1.20
 Consultations/day ... 704
 Average delay first consultations ... 46.2

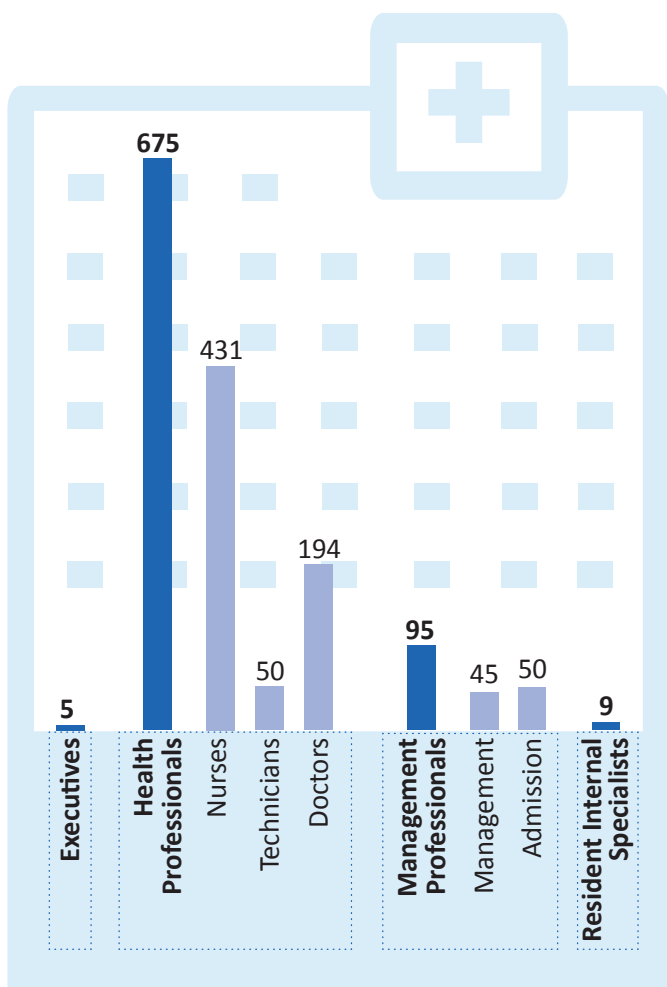
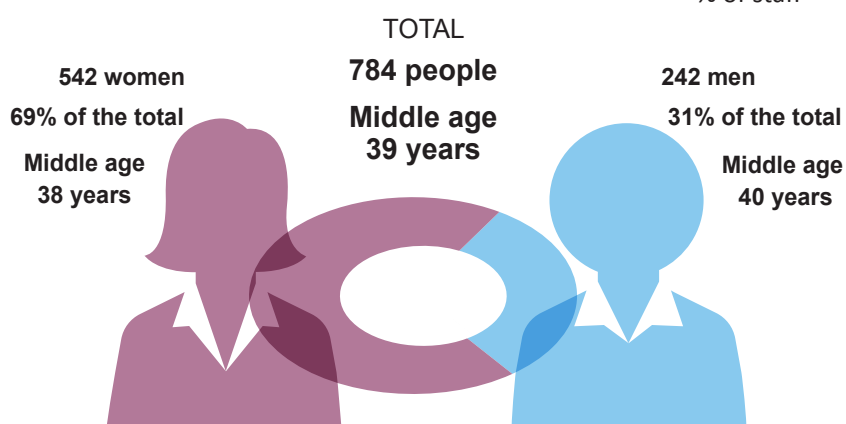
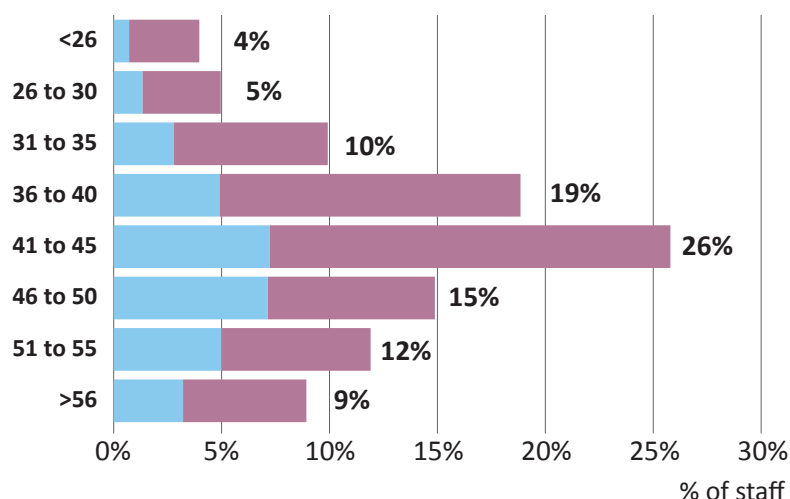
SCHEDULED ACTIVITY

Spinal Injury Unit

Revenue ... 89
 Stays ... 5,726
 Discharges ... 89
 Average stay ... 64.3
 Physiotherapy sessions ... 5,539

HUMAN RESOURCES

DISTRIBUTION OF HR BY AGE AND SEX



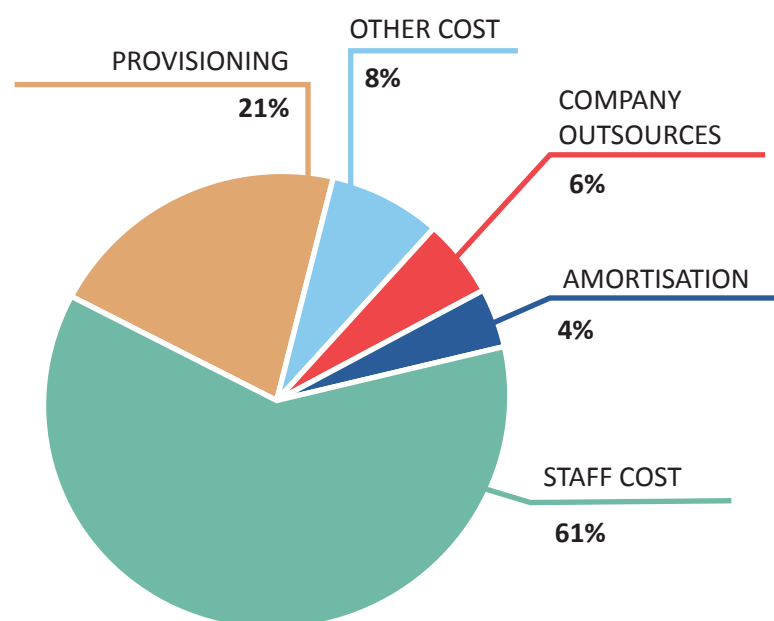
MOST FREQUENT PROCEDURES

DRG	DESCRIPTION	DISCHARGES	STAYS	AS
	HOSPITAL TOTAL (with admissions)	6,006	32,678	5.44
302	KNEE JOINT REPLACEMENT	384	1,392	3.63
073	LENS PROCEDURES, NOT INCLUDING SOCKET	328	321	0.98
194	HEART FAILURE	316	2,408	7.62
139	OTHER PNEUMONIA	216	1,426	6.60
263	LAPAROSCOPIC CHOLECYSTECTOMY	197	894	4.54
284	DISORDERS OF THE URINARY TRACT AND GALLBLADDER	159	1,124	7.07
133	RESPIRATORY FAILURE	146	1,165	7.98
045	STROKE AND PRE-CEREBRAL OCCLUSIONS WITH HEART ATTACK	139	960	6.91
446	URETHRAL AND TRANSURETHRAL PROCEDURES	133	167	1.26
720	SEPTICAEMIA AND DISSEMINATED INFECTIONS	125	1,116	8.93
190	ACUTE MYOCARDIAL INFARCTION - AMI	103	772	7.50
144	OTHER MINOR DIAGNOSES, SIGNS AND SYMPTOMS OF RESPIRATORY SYSTEMS	99	604	6.10
140	CHRONIC OBSTRUCTIVE PULMONARY DISEASE	91	612	6.73
254	OTHER DIAGNOSES OF THE DIGESTIVE SYSTEM	84	296	3.52
315	SHOULDER, ELBOW OR FOREARM PROCEDURE, EXCEPT MAJOR JOINT REPLACEMENT	83	199	2.40

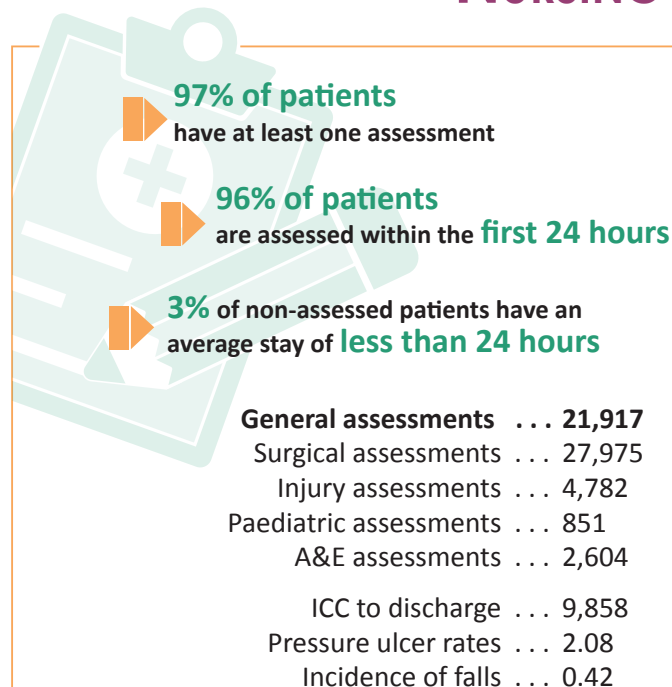
Source: ICD-10-ES 2016 / MBDS of hospitalization with admission (excluding Medical and Surgical Day Hospital)
Range: 01/01/2017 to 31/12/2017. Type: APR-DRG v. 34.0. Standard: SSCC SAS 2017 Total Coding: 62.7%



FINANCIAL RESOURCES



NURSING



Albaida del Aljarafe
Almensilla
Aznalcázar
Aznalcóllar
Benacazón
Bollullos de la Mitación
Bormujos
Castilleja de Guzmán
Castilleja de la Cuesta
Castilleja del Campo
Carrión de los Céspedes
Chucena
Espartinas
Gines
Hinojos
Huévar del Aljarafe
Mairena del Aljarafe
Olivares
Palomares del Río
Pilas
San Juan de Aznalfarache
Sanlúcar la Mayor
Salteras
Tomares
Umbrete
Valencina de la Concepción
Villanueva del Ariscal
Villamanrique de la Condesa

